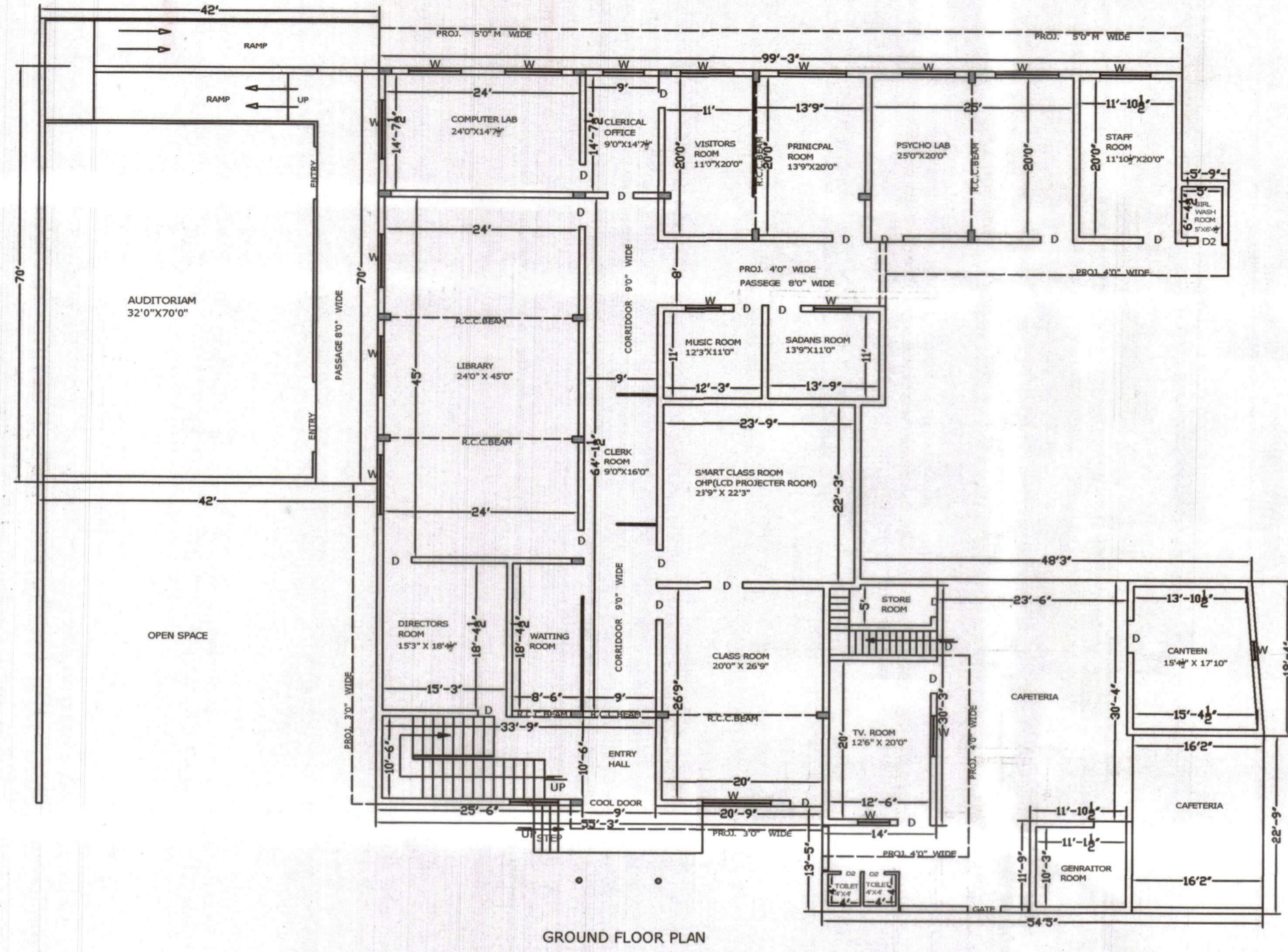
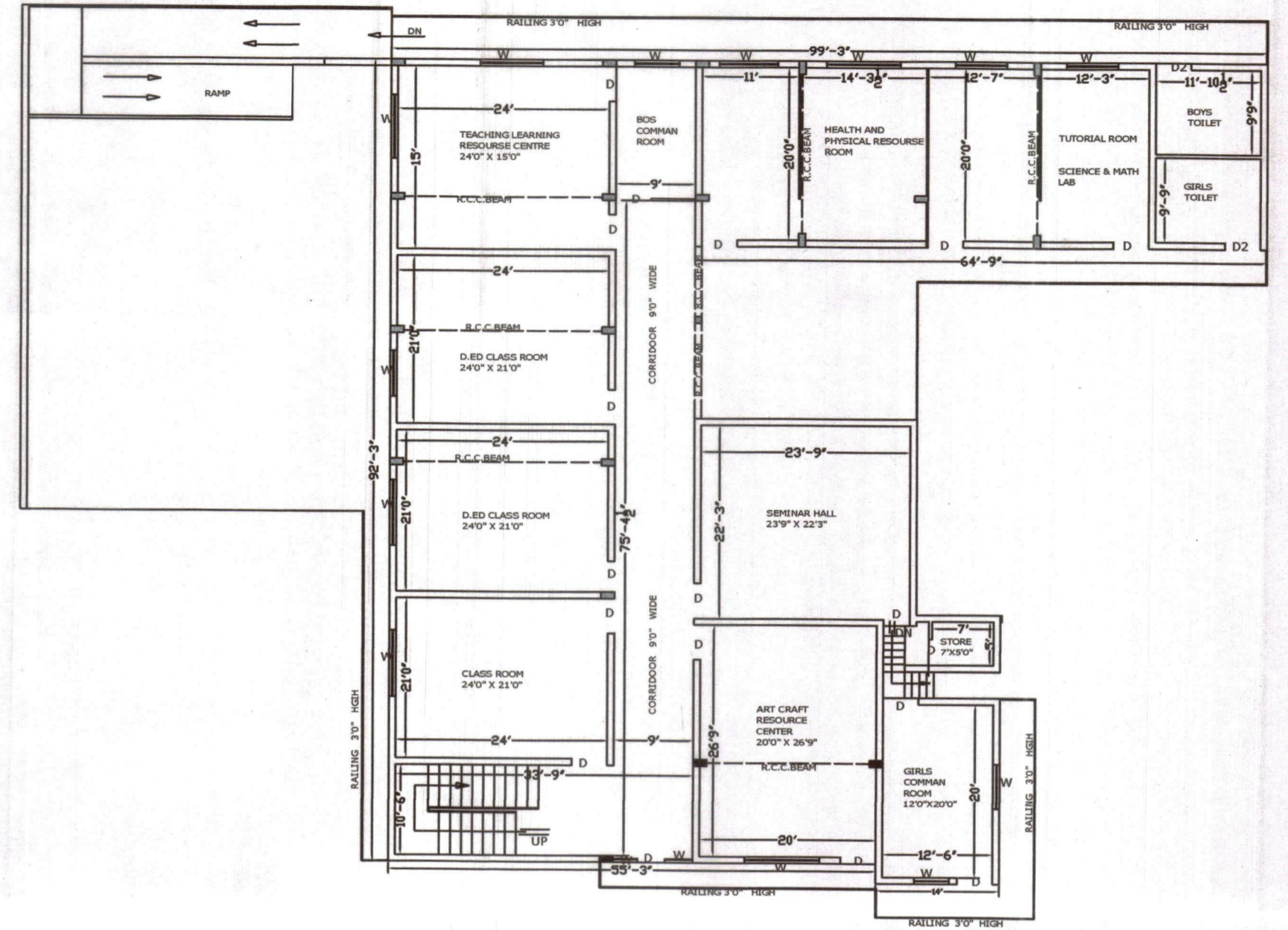


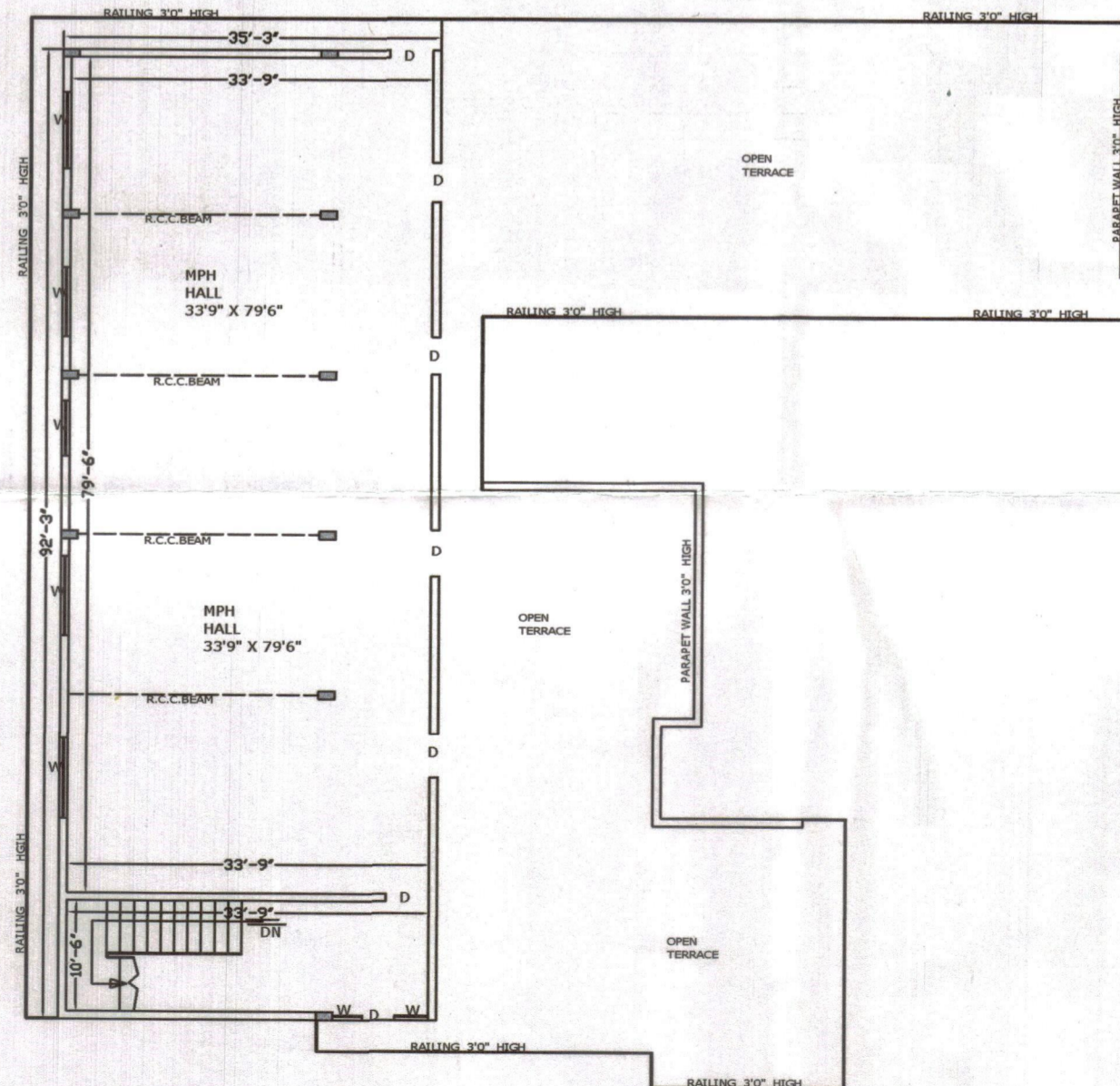
BUILDING PLAN OF " DHARAMJEEVI INSTITUTE "OF  
 PROFESSIONAL EDUCATION,VILLAGE BAGTHALA ,DISTT. KURUKSHETRA  
 RUN BY:- "DHARAMJEEVI SEWARTH TRUST KURUKSHETRA "  
 COVD. AREA AT GROUND FLOOR = 11561.61 SQFTS SAY:- 1074.50 SQMTRS  
 COVD. AREA AT F.FLOOR = 6696.33 SQFTS = 622.33 SQMTRS  
 COVD. AREA AT S.FLOOR = 3281.81 SQFTS = 305.00 SQMTRS  
 TOTAL COVD. AREA AT ( G.F.+F.F.+S.FLOOR ) = 1074.50 +622.33+305.00 = 2001.83 SQMTRS.



GROUND FLOOR PLAN



FIRST FLOOR PLAN



SECOND FLOOR PLAN

ग्राम पंचायत के प्रस्ताव  
 संख्या - 1 दिनांक 16/02/2026  
 में अनुसूचित जाति नमूना पाल  
 किया गया है।

Sarpanch *Bhagwan Singh*  
 Gram Panchayat Bagthala  
 Block Thanesar, KKR

*Vijay Salcharwal*  
 President  
 Dharamjeevi Institute of  
 Professional Education  
 KURUKSHETRA

*Sunder Kamboj*  
 Supervisor  
 Regd. No.1985/20-21  
 DULB, Hry. Govt.  
 Mob. 9416035545